

Variations on a Dashboard

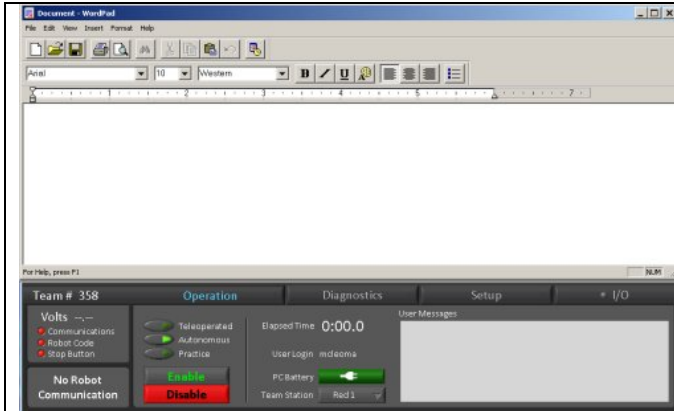


Run Any Program in Place of your Dashboard

Practically speaking you can run any program you like in place of the default Dashboard program.

For example, MS Wordpad is handy if you want to copy and paste error messages in order to save them. With Wordpad be careful not to save files in the default location of the Driver account's desktop (which isn't visible), but some shared place such as *C:\Documents and Settings\All Users\Desktop* if you want to find them again easily.

Here's how to specify the program you want run as your dashboard:

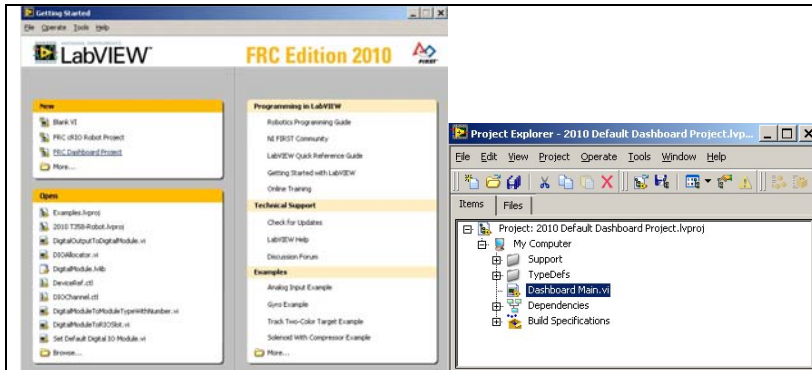


1. Go to *C:\Documents and Settings\All Users\Shared Documents*
2. Make a backup copy of the file: *FRC DS Data Storage.ini*
3. Edit the file: *FRC DS Data Storage.ini*
4. You'll see a line: *DashboardCmdLine=""C:\\Program Files\\FRC Dashboard\\Dashboard.exe""*
5. Change the file path/name to the program you want to run. Note that the double slashes are necessary.
6. Save and exit the file
7. Start the FRC Driver Station to test

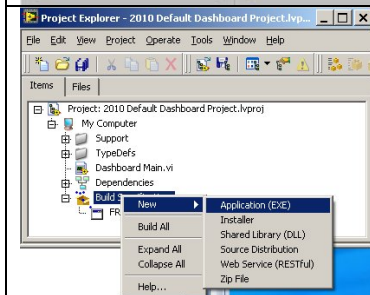
How to Create Your Own Dashboard:

Much more useful is developing your own customized dashboard to give you personalized robot feedback. Here are the steps:

1. Exit the Driver account to close everything (Setup tab -> Exit)
2. Login to the Developer Account

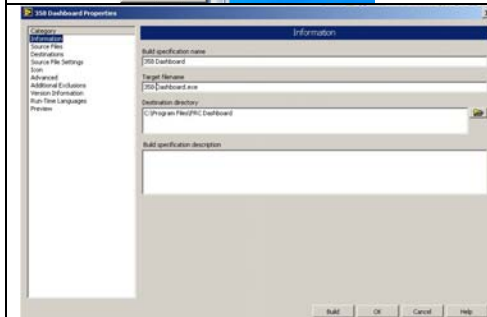


3. Use LabVIEW and create a new Dashboard project.



4. You'll need to create a standalone Dashboard application (.exe)

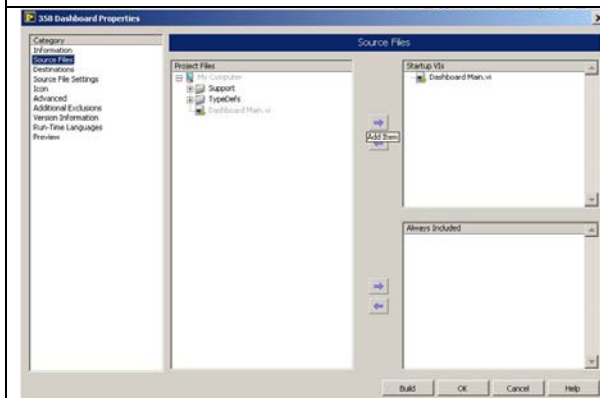
- Right click on Build Specifications -> New -> Application (EXE)



5. Tell LabVIEW what to call your new application and where to put it.

In the popup window:

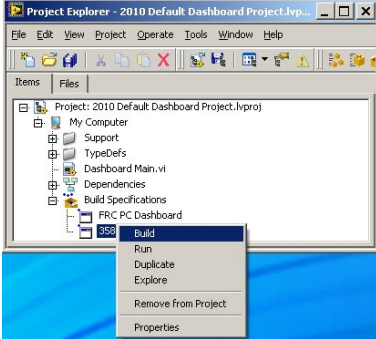
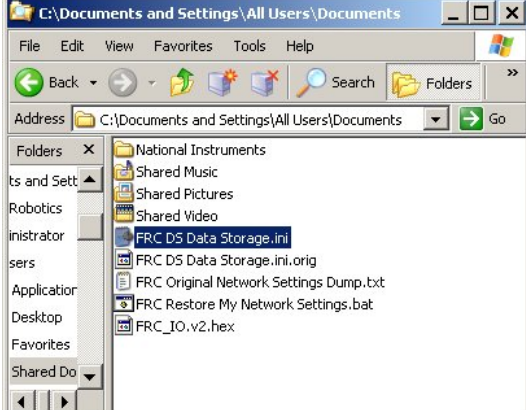
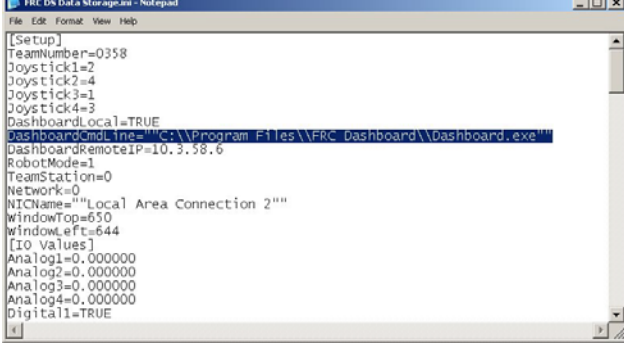
- "Build specification name" – (optional) can be anything, e.g., 358 Dashboard
- "target filename" - give it something meaningful, e.g., 358-Dashboard.exe
- Change the Destination Directory to: C:\Program Files\FRC Dashboard



6. Tell it where to begin:

- In the left list click on "Source Files"
- Click on "Dashboard Main.vi"
- Click on the right pointing arrow that will highlight
- You should see Dashboard Main appear on the right hand side under "Startup VIs".

7. Click on "Build" at the bottom to create your exe.

	<p>You can also build whenever you make code changes as you normally would by right-clicking on your specification under <i>Build Specifications</i> in the Project Explorer window.</p>
	<p>8. Tell the Driver Station to use your new Dashboard.</p> <p>Make a backup copy first just in case:</p> <ul style="list-style-type: none"> • Go to <i>C:\Documents and Settings\All Users\Shared Documents</i> • Make a backup copy of the file: <i>FRC DS Data Storage.ini</i> <p>Note: if this file is corrupted, lost or stolen then just delete anything by that same name, start the FRC Driver Station and a new default file will automatically be created.</p>
	<p>Modify the file to point to your new Dashboard program:</p> <ul style="list-style-type: none"> • Edit the file: <i>FRC DS Data Storage.ini</i> • You'll see a line: <i>DashboardCmdLine=""C:\Program Files\FRC_dashboard\Dashboard.exe""</i> • Change the name of Dashboard.exe to <i>358-Dashboard.exe</i> • Save and exit the file
	<p>9. Login to the Driver account to start up the new dashboard to test it.</p>

Now of course, you can go back and edit the project to customize the Dashboard for yourself.

FRCMastery did a video training segment on modifying the Dashboard: <http://www.lvmastery.com/TipJar2009-02-10>