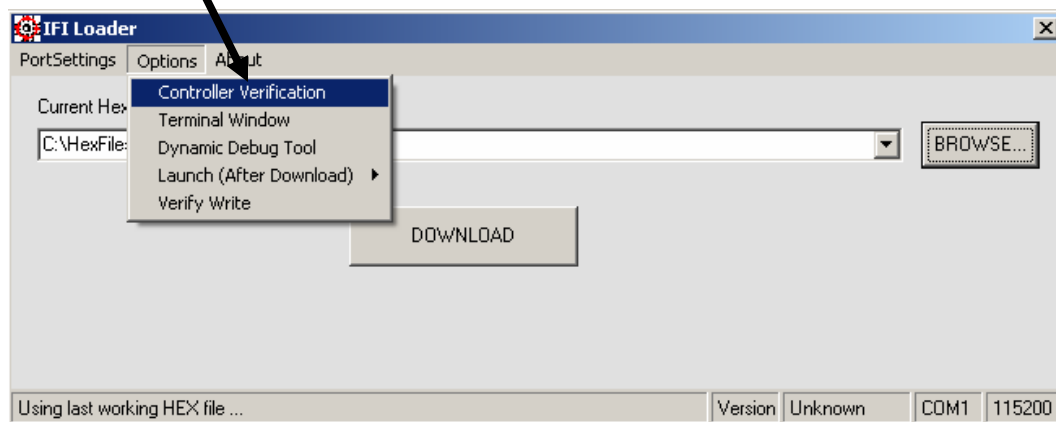


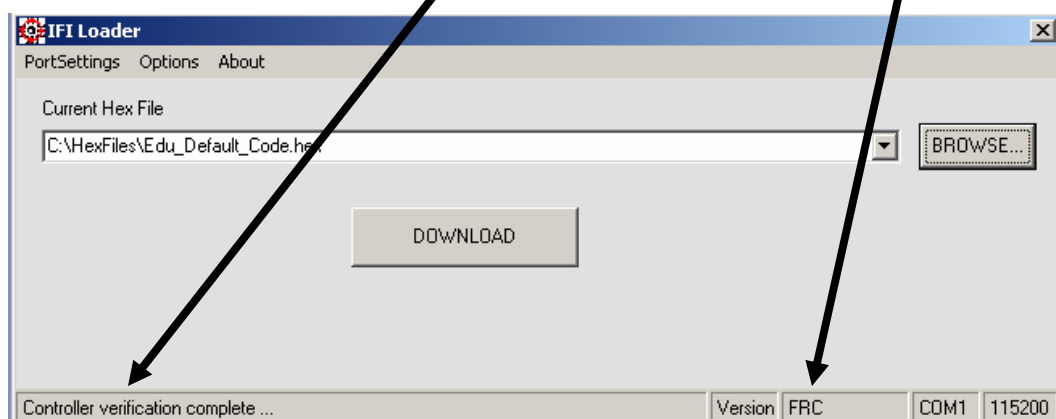
The following process is how to update MINI firmware in the Master processor.

The **1st Step** is to make sure the controller is off. Press and hold the PROG button and then press and release the ON/OFF button until the Battery Power LED becomes solid green. Now release the PROG button. You should see a flashing green light on the Battery Power LED and a solid yellow light on the Program State LED. Now you are able to download the appropriate BIN file.

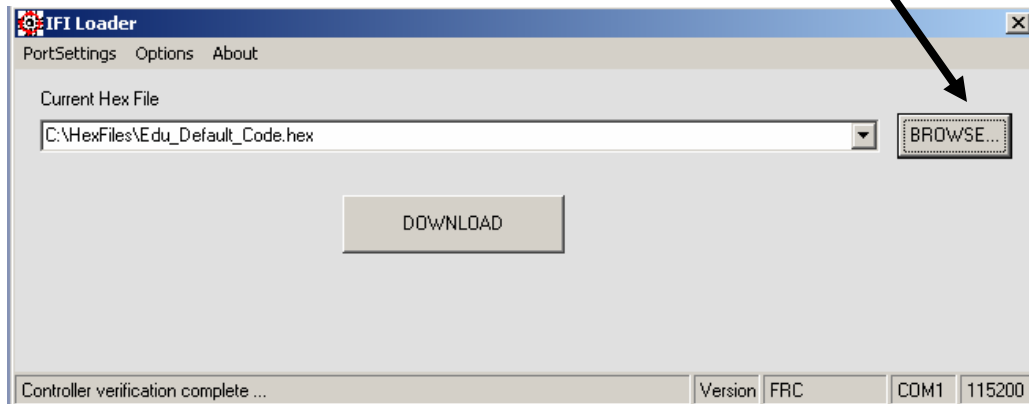
The **2nd Step** is to make sure that the robot controller has been verified first. Make sure a serial cable has been attached from the PC to the controller board prior to this operation. The IFI-Loader supports many different robot controllers. The verification allows the Loader to select the appropriate protocol used during the download process.



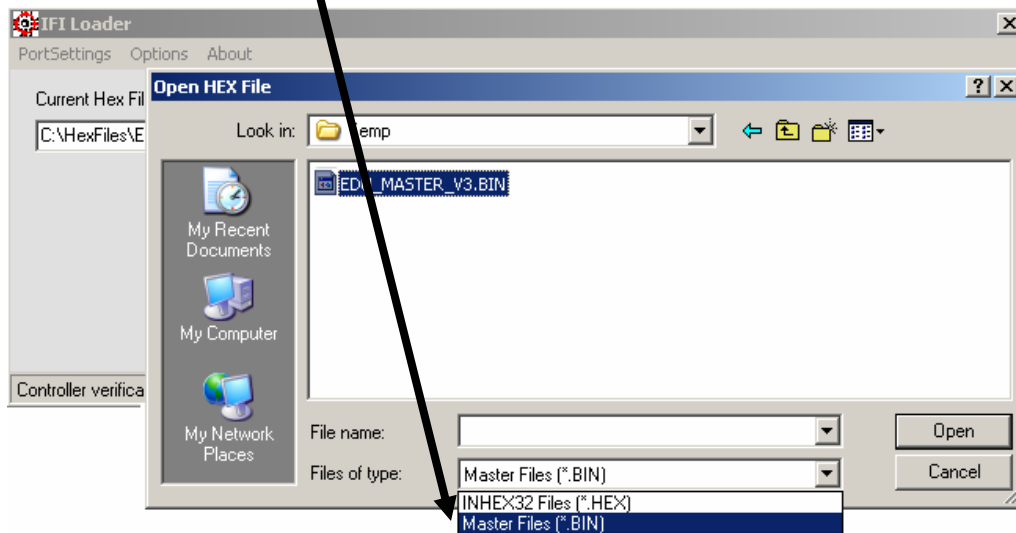
Now you should see 'Controller verification complete ...' on the lower left and 'FRC' in the lower right of the status window (the EDU and FRC download the same way).



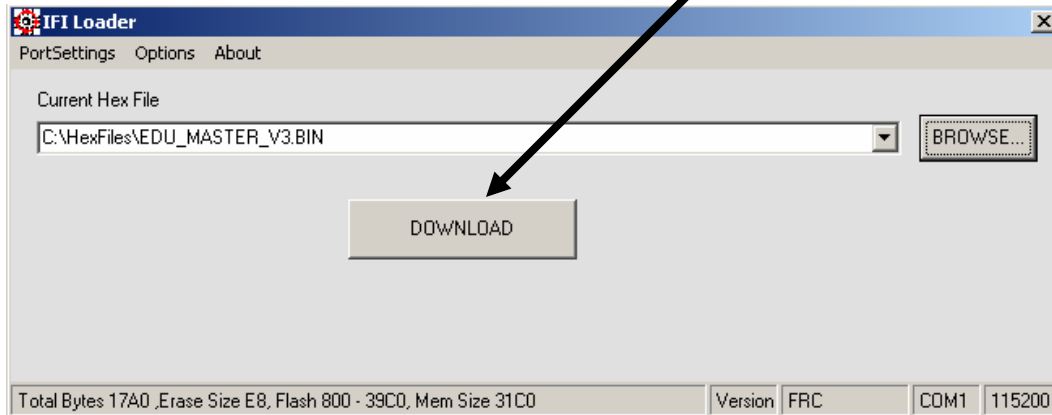
The **3rd Step** is to download the BIN file. To do this, click on the browse button.



Next, select "Master Files (*.BIN)" in the combo box.



Once the appropriate BIN file has been selected, click on the DOWNLOAD button.



The **4th Step** is to download the user code. Once the master firmware has been updated, the user code must be reloaded. In order to do this, repeat **Step 3**. Rather than selecting “Master Files (*.BIN)”, you must select the “INHEX32 Files (*.HEX)” option. After downloading the appropriate user code (file), the robot controller is ready for use.